

The architecture, engineering, and design of the project using the Tremco products are the responsibility of the project's design professional. All products and systems must comply with local building codes and standards. This detail is for general information and guidance only and Tremco specifically disclaims any liability for the use of this detail. The project design professional determines, in its sole discretion, whether this detail or a functionally equivalent detail is best suited for the project. This detail is subject to change without notice. Contact Tremco to ensure you have the most recent version.

TREMDrain

Detail: TREMDrain at Inside/Outside Corner

File Name:

Drawn by: HDE

Checked by: WH

Scale: NTS

Date: 5/25/2023

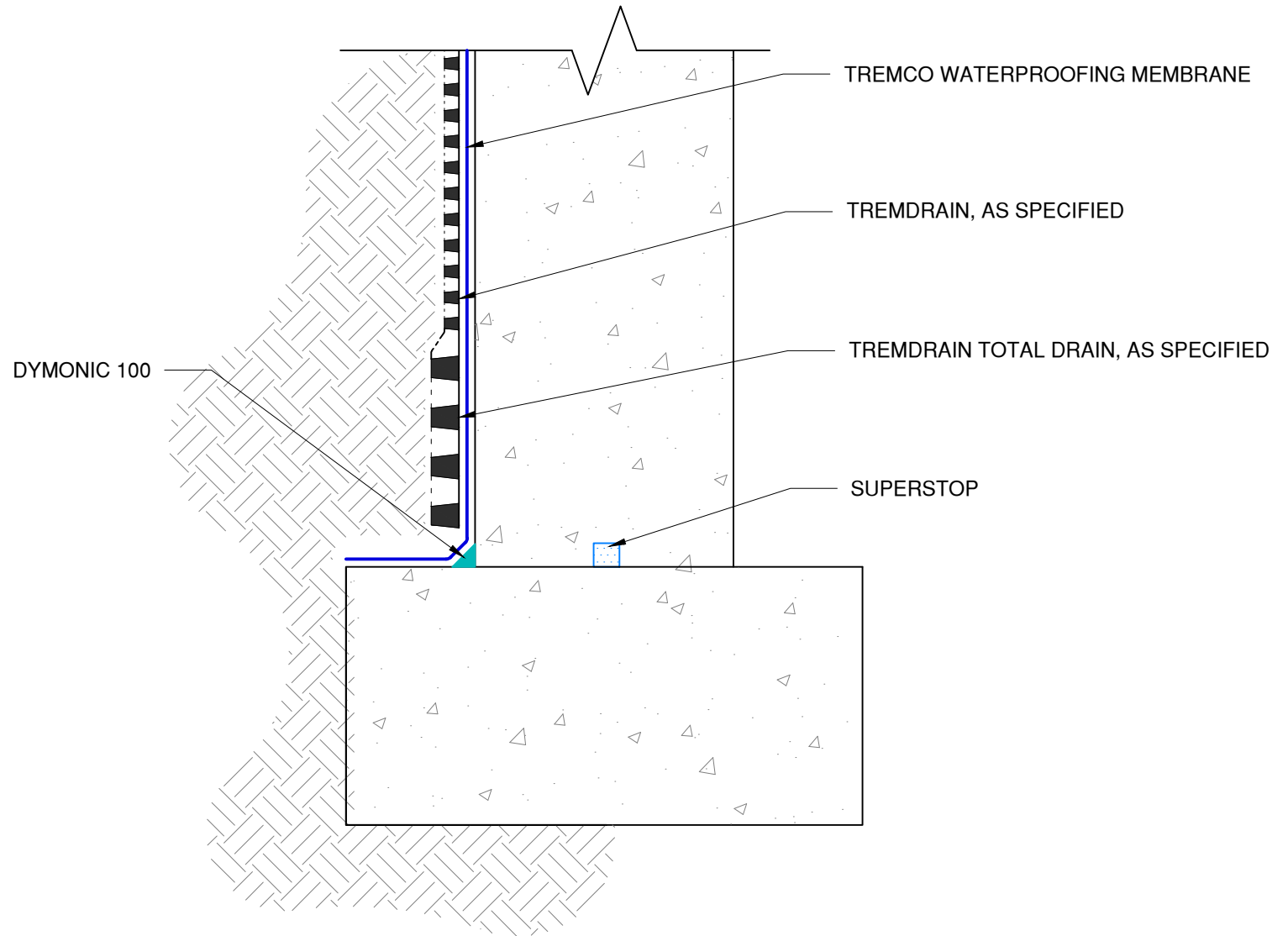
TD-C-01



Tremco Technical Support: 866-209-2404



www.tremcocpg.com

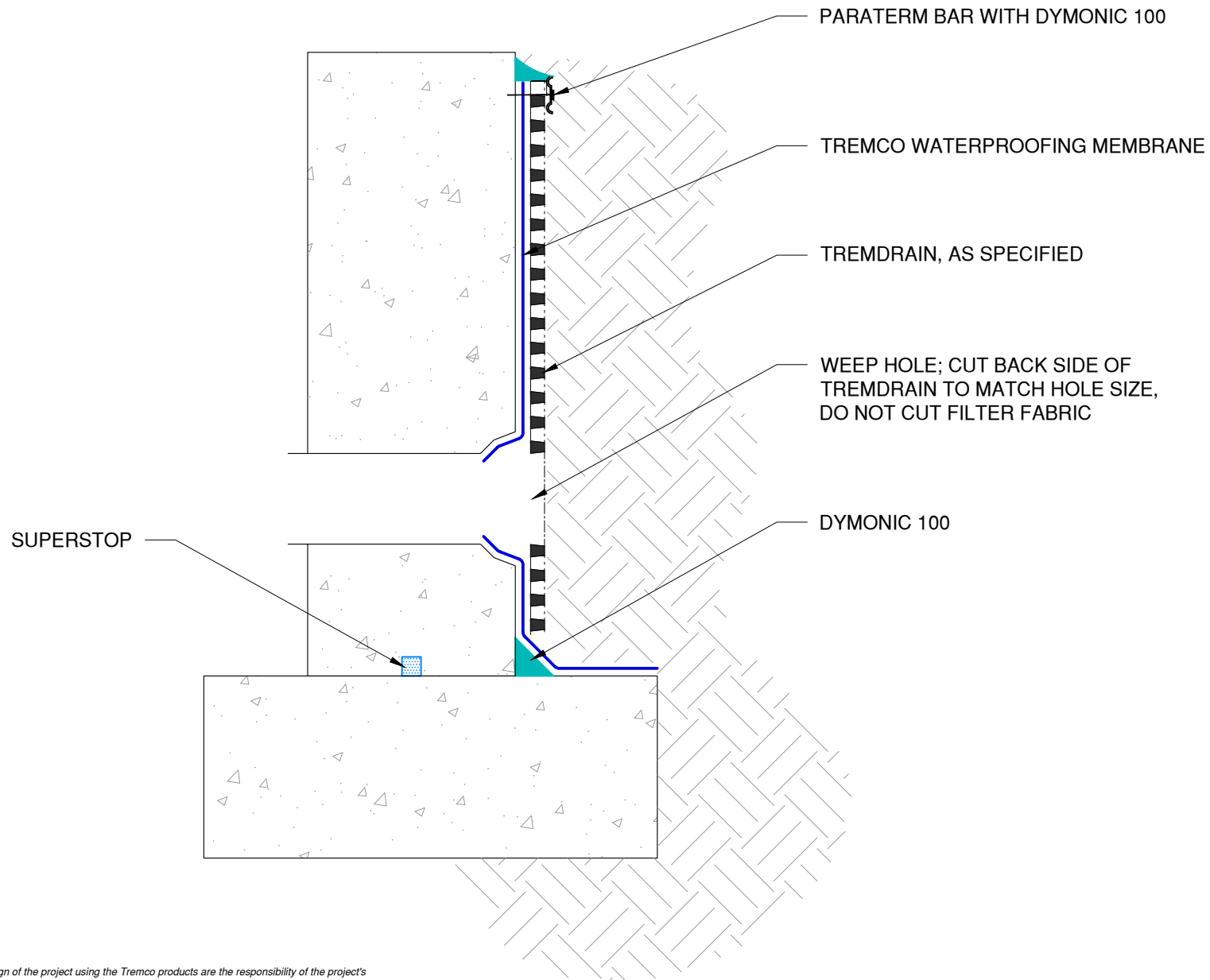




The architecture, engineering, and design of the project using the Tremco products are the responsibility of the project's design professional. All products and systems must comply with local building codes and standards. This detail is for general information and guidance only and Tremco specifically disclaims any liability for the use of this detail. The project design professional determines, in its sole discretion, whether this detail or a functionally equivalent detail is best suited for the project. This detail is subject to change without notice. Contact Tremco to ensure you have the most recent version.

TREMDrain

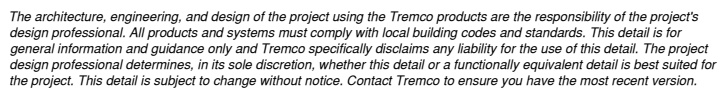
 Tremco Technical Support: 866-209-2404	Detail: TREMDrain with Tremco Waterproofing at Footing				File Name: TD-G-01	 Construction Products Group
	Drawn by: HDE	Checked by: WH	Scale: NTS	Date: 5/25/2022		
	www.tremcocpg.com					



The architecture, engineering, and design of the project using the Tremco products are the responsibility of the project's design professional. All products and systems must comply with local building codes and standards. This detail is for general information and guidance only and Tremco specifically disclaims any liability for the use of this detail. The project design professional determines, in its sole discretion, whether this detail or a functionally equivalent detail is best suited for the project. This detail is subject to change without notice. Contact Tremco to ensure you have the most recent version.

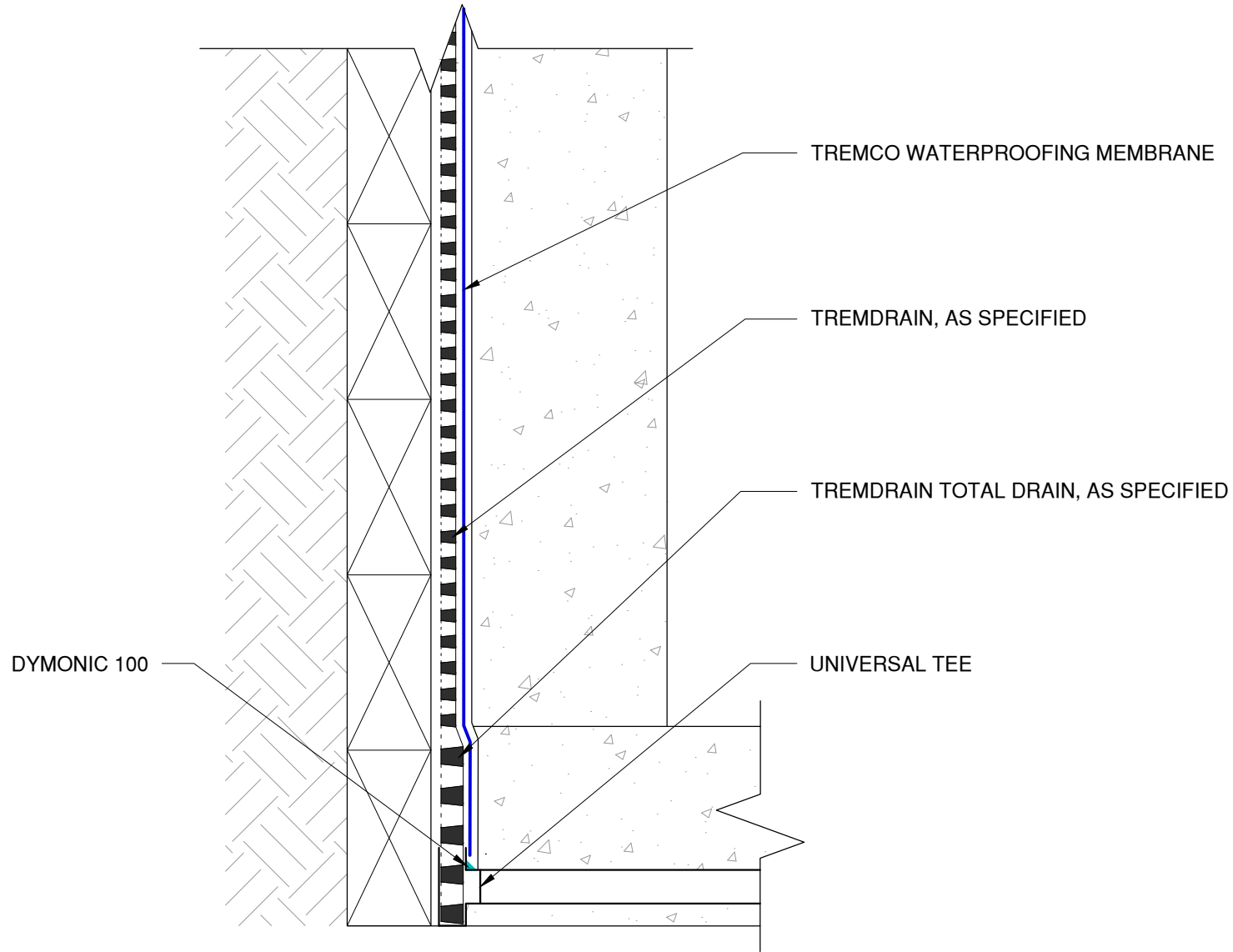
TREMDrain

 Tremco Technical Support: 866-209-2404	Detail: TREMDrain with Tremco Waterproofing at Retaining Wall with Weep Hole				File Name: TD-G-02	 Construction Products Group
	Drawn by: HDE	Checked by: WH/GM	Scale: NTS	Date: 5/25/2023		
	www.tremcocpg.com					



www.tremcocpg.com

NOTE: NOT INTENDED FOR SUBMERGED OR HYDROSTATIC HEAD CONDITIONS



The architecture, engineering, and design of the project using the Tremco products are the responsibility of the project's design professional. All products and systems must comply with local building codes and standards. This detail is for general information and guidance only and Tremco specifically disclaims any liability for the use of this detail. The project design professional determines, in its sole discretion, whether this detail or a functionally equivalent detail is best suited for the project. This detail is subject to change without notice. Contact Tremco to ensure you have the most recent version.

TREMDrain

Detail: TREMDrain with Universal Tee at Blindside Wall Connections

File Name:

Drawn by: HDE

Checked by: WH

Scale: NTS

Date: 5/27/2022

TD-G-04

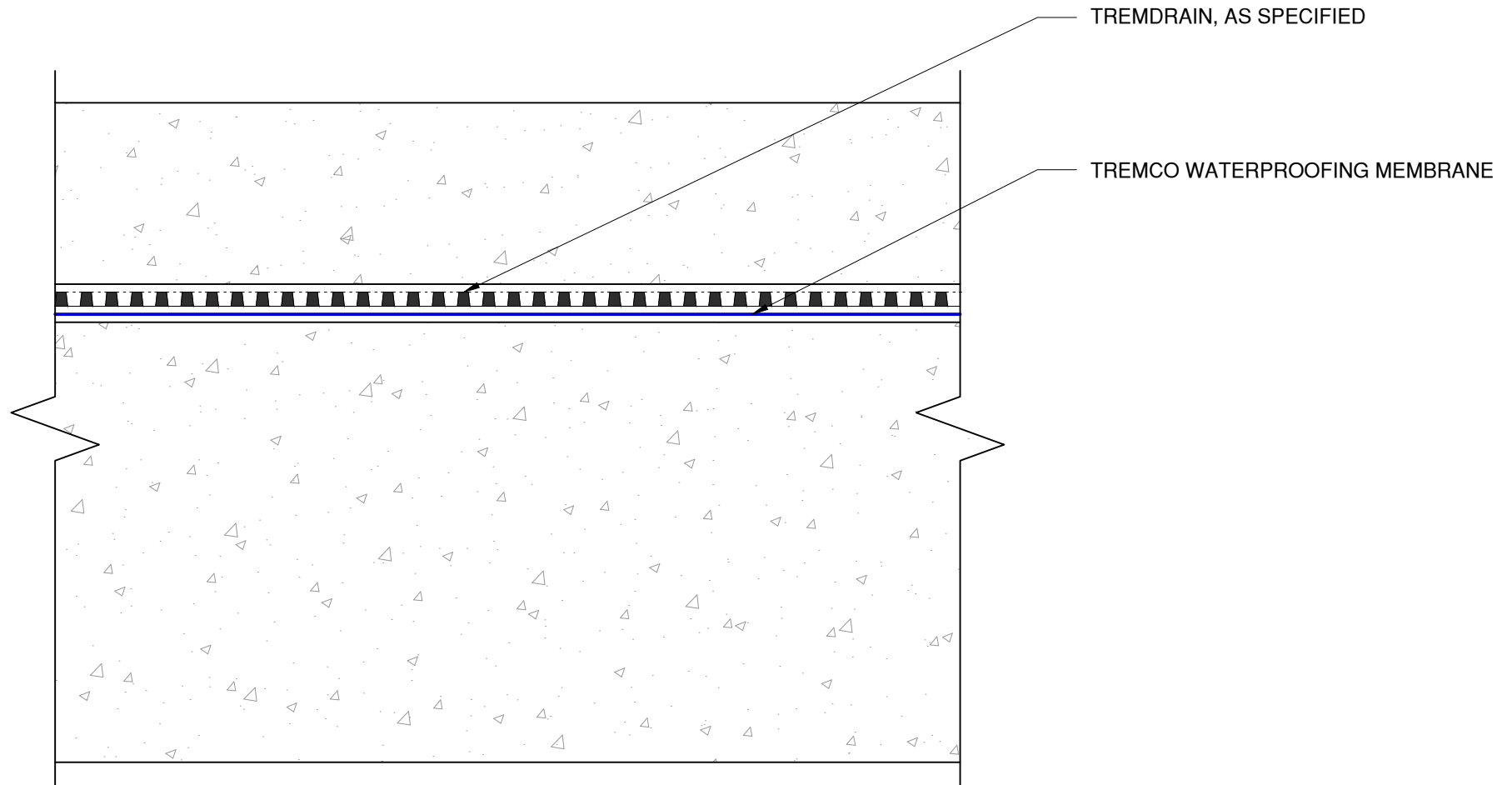


Tremco Technical Support: 866-209-2404

www.tremcocpg.com



Construction Products Group



The architecture, engineering, and design of the project using the Tremco products are the responsibility of the project's design professional. All products and systems must comply with local building codes and standards. This detail is for general information and guidance only and Tremco specifically disclaims any liability for the use of this detail. The project design professional determines, in its sole discretion, whether this detail or a functionally equivalent detail is best suited for the project. This detail is subject to change without notice. Contact Tremco to ensure you have the most recent version.

TREMDrain

Detail: TREMDrain with Tremco Waterproofing at Horizontal Application

File Name:

Drawn by: HDE

Checked by: WH

Scale: NTS

Date: 5/25/2022

TD-G-05

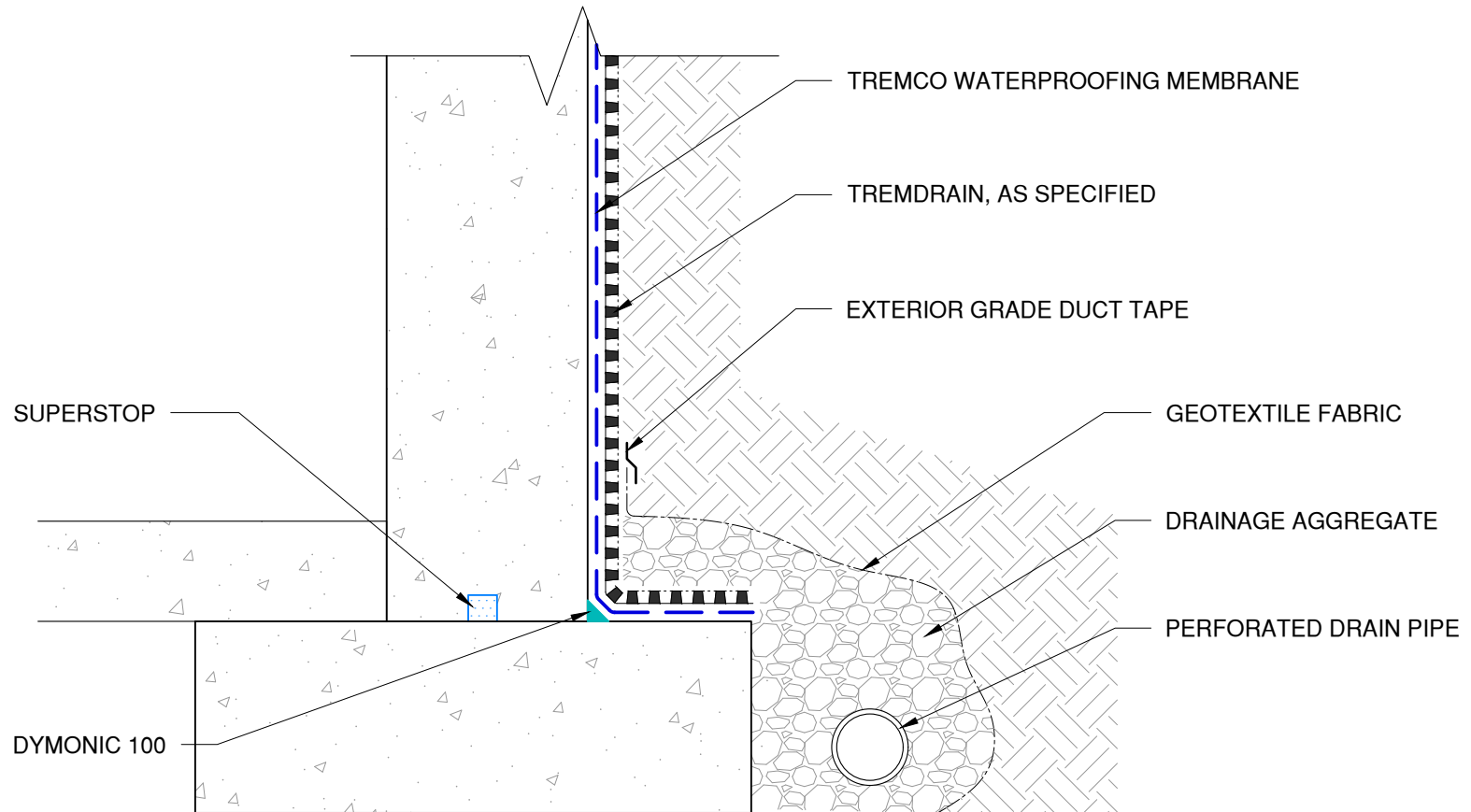


Tremco Technical Support: 866-209-2404

www.tremcocpg.com



Construction Products Group



The architecture, engineering, and design of the project using the Tremco products are the responsibility of the project's design professional. All products and systems must comply with local building codes and standards. This detail is for general information and guidance only and Tremco specifically disclaims any liability for the use of this detail. The project design professional determines, in its sole discretion, whether this detail or a functionally equivalent detail is best suited for the project. This detail is subject to change without notice. Contact Tremco to ensure you have the most recent version.

TREMDrain



Tremco Technical Support: 866-209-2404

Detail: TREMDrain at Pipe Collection System

Drawn by: KAB

Checked by: WH/GM

Scale: NTS

Date: 5/25/2023

File Name:

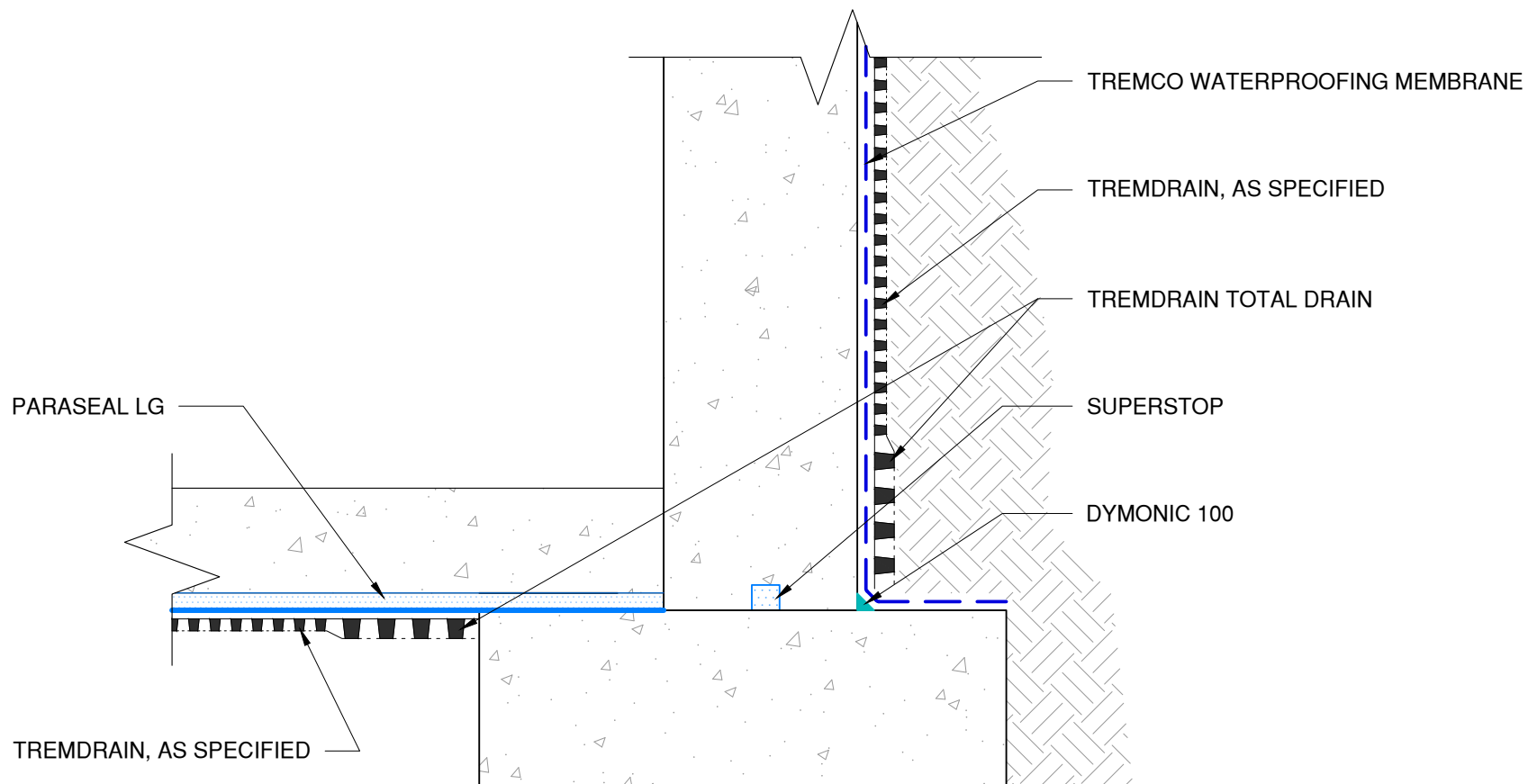
TD-G-06



Construction Products Group

www.tremcocpg.com

NOTE: PARASEAL PRODUCTS REQUIRE A MIN 24 PSF OF COMPACTION/CONFINEMENT IN ORDER TO FUNCTION AS DESIGNED



The architecture, engineering, and design of the project using the Tremco products are the responsibility of the project's design professional. All products and systems must comply with local building codes and standards. This detail is for general information and guidance only and Tremco specifically disclaims any liability for the use of this detail. The project design professional determines, in its sole discretion, whether this detail or a functionally equivalent detail is best suited for the project. This detail is subject to change without notice. Contact Tremco to ensure you have the most recent version.

TREMDrain

Detail: TREMDrain at Installation Under Slabs

File Name:

Drawn by: KAB

Checked by: WH

Scale: NTS

Date: 5/25/2023

TD-G-07

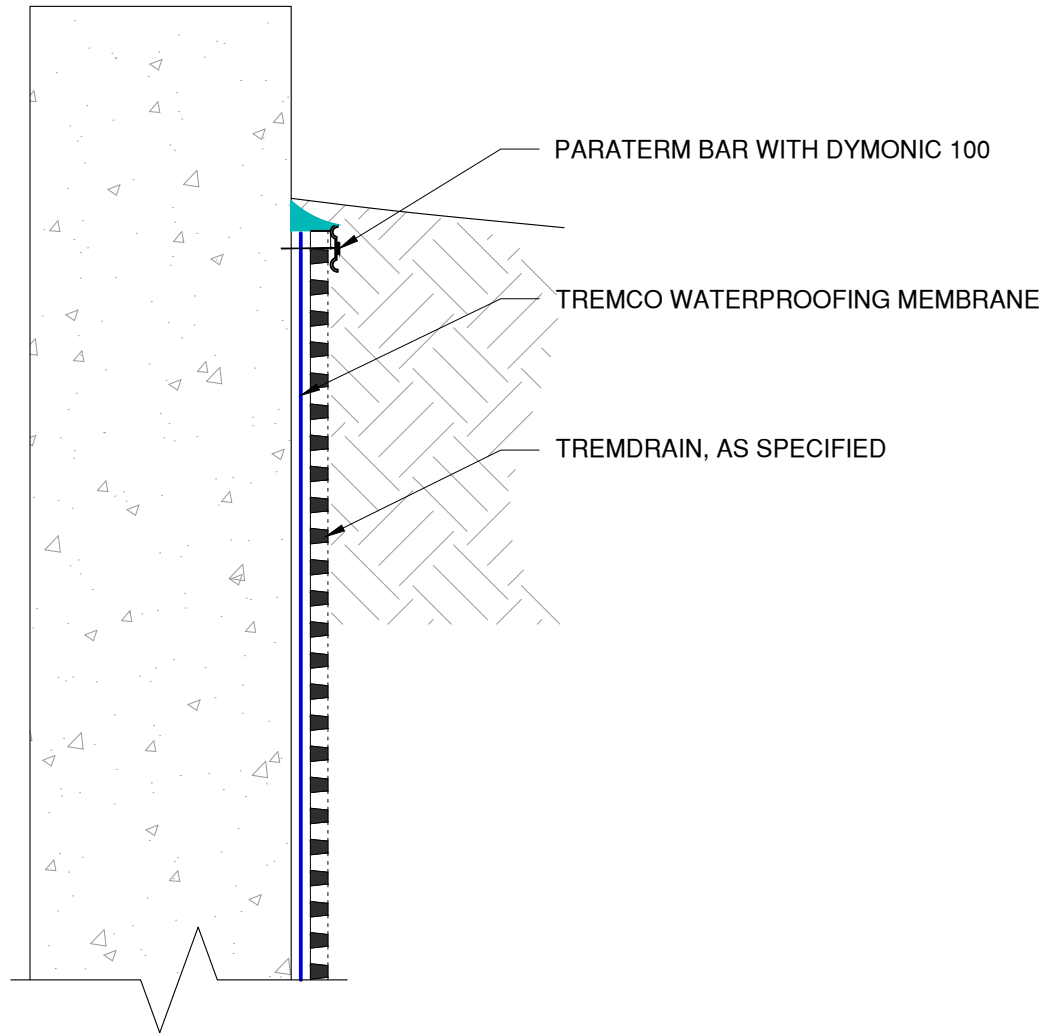


Tremco Technical Support: 866-209-2404

www.tremcocpg.com



Construction Products Group



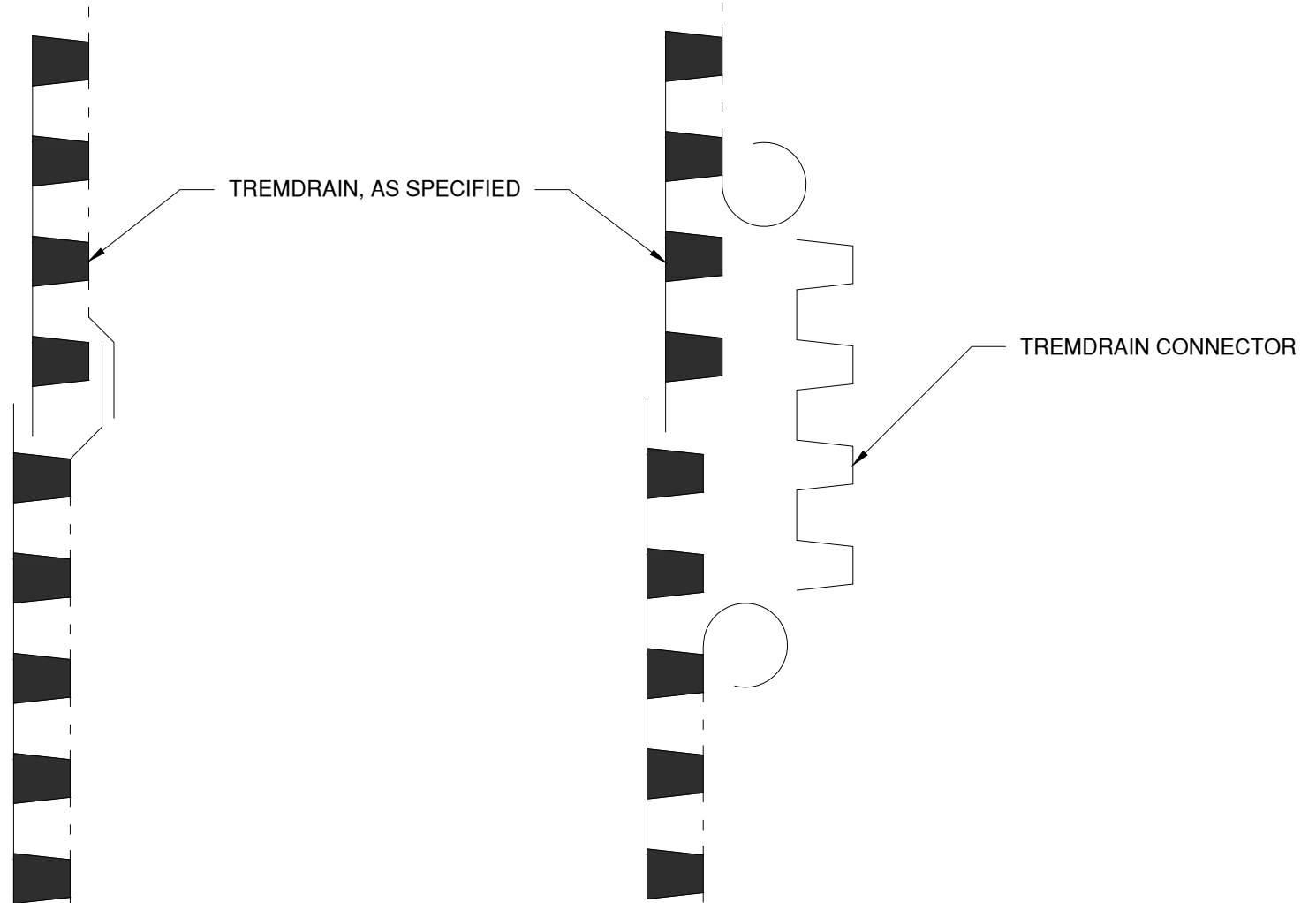
The architecture, engineering, and design of the project using the Tremco products are the responsibility of the project's design professional. All products and systems must comply with local building codes and standards. This detail is for general information and guidance only and Tremco specifically disclaims any liability for the use of this detail. The project design professional determines, in its sole discretion, whether this detail or a functionally equivalent detail is best suited for the project. This detail is subject to change without notice. Contact Tremco to ensure you have the most recent version.

TREMDrain

 Tremco Technical Support: 866-209-2404	Detail: TREMDrain with Tremco Waterproofing Termination at Grade				File Name: TD-G-08	 Construction Products Group
	Drawn by: KAB	Checked by: WH	Scale: NTS	Date: 2/27/2024		
	www.tremcocpg.com					

OPTION 1

OPTION 2



The architecture, engineering, and design of the project using the Tremco products are the responsibility of the project's design professional. All products and systems must comply with local building codes and standards. This detail is for general information and guidance only and Tremco specifically disclaims any liability for the use of this detail. The project design professional determines, in its sole discretion, whether this detail or a functionally equivalent detail is best suited for the project. This detail is subject to change without notice. Contact Tremco to ensure you have the most recent version.

TREMDrain

 Tremco Technical Support: 866-209-2404	Detail: TREMDrain Seam Details				File Name: TD-S-01	 Construction Products Group
	Drawn by: HDE	Checked by: WH	Scale: NTS	Date: 5/18/2022		
	www.tremcocpg.com					